

Technical Specification

REF: PC5

ISS: 1

Key Features

- Integral Reflex Reflector
- Integral iLS Failure Detection
- LED Replacement for OEM Product
- IP67 Hermetically Sealed
- Simple 2 Stud Surface Mount

Technical Specification

Functions: Stop | Tail | Indicator

Homologation: ECE

Voltage: 12v | 24v

Power Consumption: Stop (12v) 1.8w, (24v) 2.2w

Tail (12v) 0.1w, (24v) 0.3w

D.I (12v) 1.8W, (24v) 1.6w

Connection : Deutsch Connector – 4 way DT06

Fixing : M6 Bolt

IP Rating : IP67

Material : Lens - PMMA | Housing - PC/ABS

Temperature Range : -40°C to +50 °C

Part Numbers

CR308SZZ-2-2-AA Stop/Tail/Indicator, LED 12v

CR308SZZ-4-2-AA Stop/Tail/Indicator, LED 24v

See Also

CRL300 – with bulb light source

CRL300DLED Combination Lamp



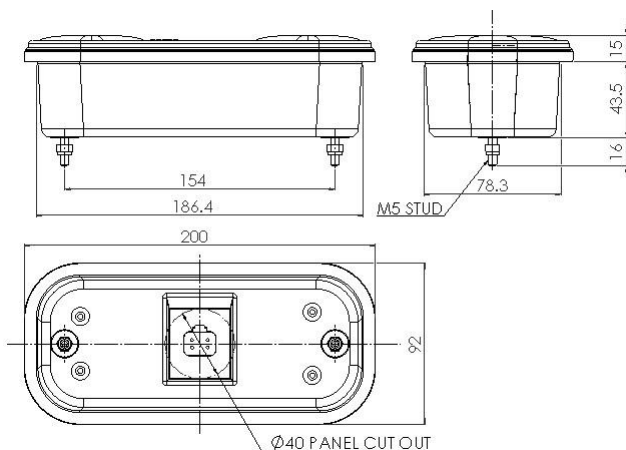
Overview

Directly Interchangeable Combination Lamp LED Upgrade for the OEM Incandescent Bulb lamp - CRL300D.

Features an Integral Direction Indicator Failure Detection System when used in conjunction with Perei iLS Intelligent Flasher Relay, for simple replacement of incandescent lamps in OEM applications.

Includes an Integral Deutsch DT06 Connector for Plug & Play simplicity.

Drawing



www.perei.co.uk | sales@perei.co.uk | +44 (0) 1842 812290

Perei Group Limited | Keystone Innovation Centre | Thetford | Norfolk | IP24 1JD | United Kingdom

Specifications herein are subject to change without notice

PEREI